

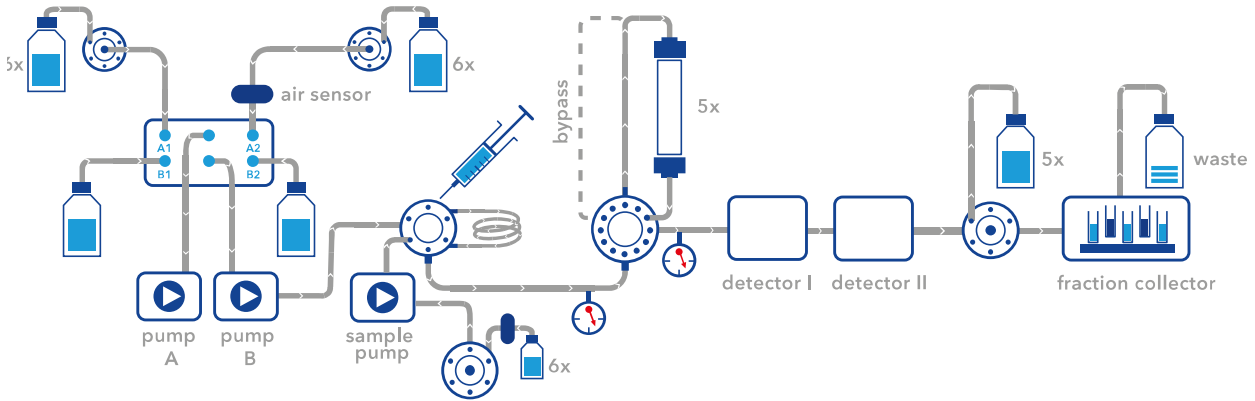
# System configurator

## Preparative HPLC by KNAUER

**MAKE YOUR PRESELECTION**

SST

Titanium



**BUFFER SELECTION & DELIVERY**

- 10 ml/min binary gradient pump P 6.1L
- 10 ml/min quaternary pump P 6.1L
- 50 ml/min binary gradient pump P 6.1L
- ..... x 100 ml/min pump P 2.1L
- ..... x 250 ml/min pump P 2.1L
- ..... x 500 ml/min pump P 2.1L
- ..... x 1000 ml/min pump P 2.1L
- Ternary gradient module for pump P 2.1L
- Binary gradient module for pump P 2.1L
- ..... x solvent selection valve (6 further inlets)

**SAMPLE INJECTION**

- Injection valve
- Sample pump module
- Sample selection valve: ..... x inlets
- Autosampler AS 6.1L

**COLUMN SELECTION & THERMOSTAT**

- Column selection (two columns or one bypass)
- Column selection high flow (5 columns, one bypass)

**DETECTION**

- UV/VIS single wavelength
- UV/VIS multiwave length
- DAD 2.1L
- Fluorescence Detector RF-20 A
- Conductivity
- pH
- Refractive index
- Light Scattering
- 4000 MiD
- A/D-converter (integration of further detectors)

**FRACTION COLLECTION**

- Fractionation valve
- Foxy fraction collector with fixed rack types
- Labocol fraction collector with individual rack types
- Rack for fraction collector
- Flow splitter

**ACCESSORIES**

- ..... x Airsensor main pump
- ..... x Airsensor feed pump
- Pressure control (2 pressure sensors)
- ..... x Backpressure regulator
- AZURA Organizer
- ..... x Tubing 1/16"
- ..... x Tubing 1/8"
- ..... x Tubing 1/4"
- Workstation (Windows)

**SOFTWARE**

- ClarityChrom®
- OpenLAB®
- PurityChrom®
- Chromeleon™
- Mobile Control

**COMMON APPLICATIONS**

- Reversed phase
- Normal phase
- other...
- System Qualification